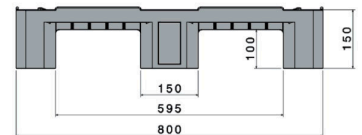
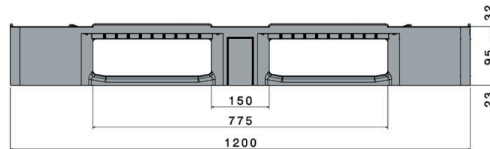





D1 ECO

1200 x 800 mm



Art. no. 83360231

Technical data ^{*1}

Dimensions L x W x H (mm)	1200 x 800 x 150		
Weight (kg)	14.5		
Material ^{*3}	HDPE, Regranulated material		
Load capacity (kg) ^{*2}	 Static 5000	 Dynamic 1250	 In racking system 1000



Characteristics

Colour: black
 Runners: 3, unwelded
 Reinforcement profiles: 3
 Rims: 7 mm
 Temperatur stability: -30 °C to +40 °C, briefly up to +90 °C
 Manufactured from regranulated material of one single type

Options

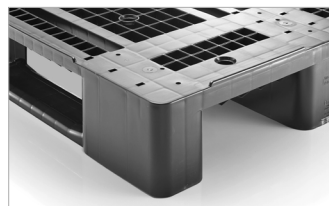
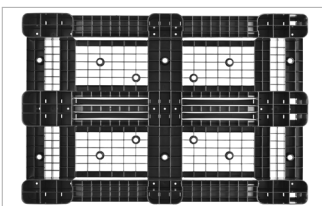
Transponder
 Reinforcement profiles
 Rims
 Antislip

Loading quantities (pcs/approx.)

	Container	Container 20': 215 Container 40': 440	Container 40' High Cube: 490 Conventional trailer 45' high cube container: 544
		Truck	MEGA-Trailer: 646 Jumbo: 684-722

Labelling options

Customised printing and numbering available on request depending on quantity. Position upon consultation.



^{*1} All technical data include characteristic features, which have been tested under specially defined conditions. Varying data may result from different conditions of usage such as loading method, prevailing temperature and length of storage time. Our service team is pleased to be at your disposal to check the special requirements of your individual application.

^{*2} **Static load:** resistance to pressure on a flat ground surface and an evenly distributed load at a room temperature of approx. 20 °C.

Dynamic load: on a forklift with an evenly distributed load at a room temperature of approx. 20 °C.

In racking system: evenly distributed load (sacks) along the longitudinal sides. Resting on two supports for over 100 h at a room temperature of approx. 20°C.

^{*3} Although still within ISO compulsory range, the load-bearing test results using pallets made from regranulated material show slightly more variation than those from virgin HDPE.