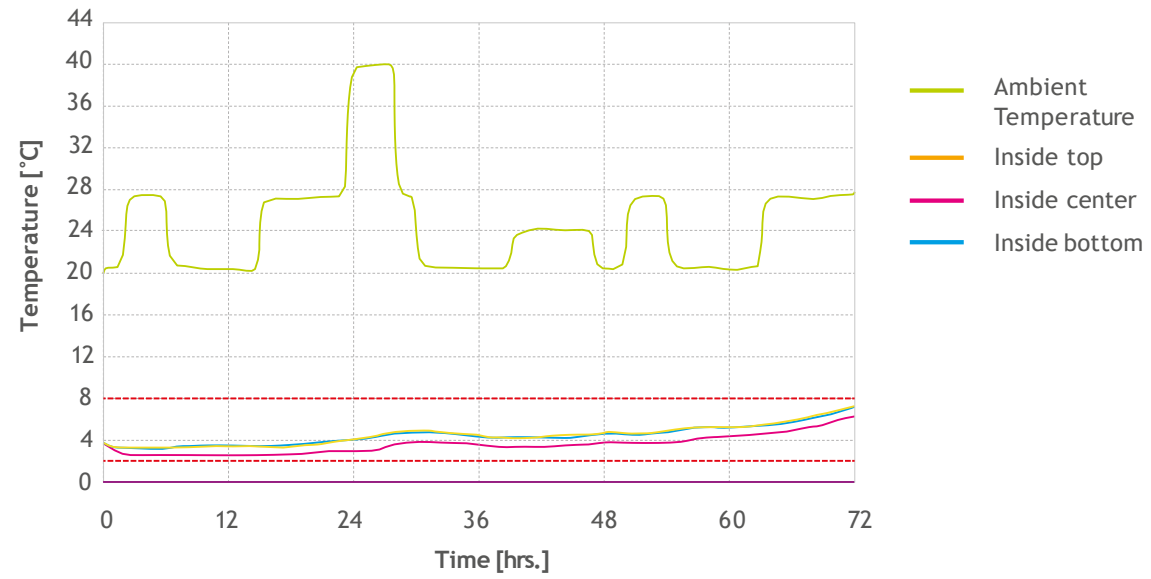
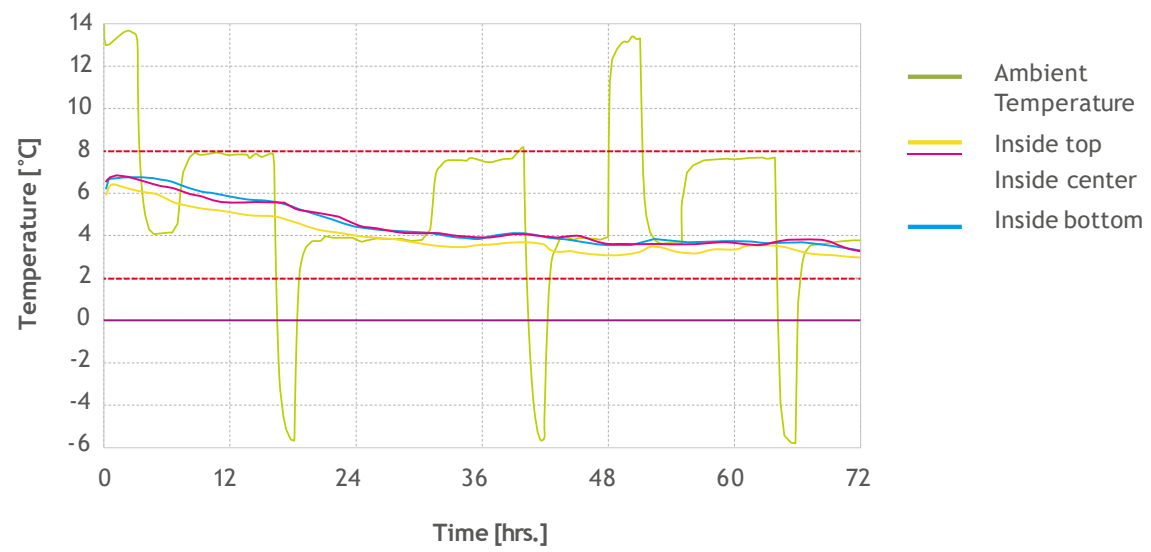


## Temperature profile Pharmabox-S

AFNOR S99-700 protocol: Mediterranean Summer Profile, 72h



Modified AFNOR S99-700 protocol: Central & Northern European Winter, 72h



# PHARMABOXES

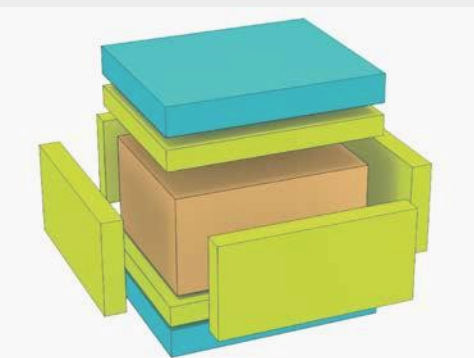
2°-8 °C Shipments  
Qualified for transit periods of 72-96 hours



[info@logeq.eu](mailto:info@logeq.eu)  
[www.logeq.eu](http://www.logeq.eu)

[www.LogEq.eu](http://www.LogEq.eu)





# PHARMABOXES 2-8 °C

LogEq offers a family of pre-qualified packagings for sensitive pharmaceutical goods. Developed in cooperation with major pharmaceutical producers and shippers, Pharma Boxes are tested and qualified for 2-8 °C shipments with transit times of up to 72-96 hours. Qualification protocols for both, summer and winter periods have been applied.

## Properties and advantages

- Efficient insulation based on the combination of EPS panels and Isohood-2L2 insulation foil
- No condensation humidity due to Coolbricks
- Coolbricks in standard sizes may be used for 3 different box sizes
- Extension of temperature control up to 24 hours by use of +5 °CPCM-COOLBRICKS possible

Sizes and formats:

Box:	XS	S	M	L	XL
Runtime [hrs.]	48	72	72	72	96
Number of Coolbricks	8 Pcs./3.8kg	8 Pcs./10.2kg	8 Pcs./16.4kg	8Pcs./22.6 kg	14 Pcs./41.8 kg
Outside Dimensions [mm]	360 x 305 x 370	430 x 380 x 405	555 x 455 x 400	565 x 455 x 545	795 x 555 x 545
Payload Dimensions [mm]	177 x 125 x 120	245 x 201 x 120	370 x 268 x 120	370 x 268 x 245	595 x 370 x 245
Payload Volume [l]	2.7	5.9	11.9	24.3	53.9
Tare weight incl. Coolbricks [kg]	4.7	13.1	19	25.6	46.4

## Additional sizing options

For customers who need more than one box size, the new formats M<sub>ii</sub> and L<sub>ii</sub> offer additional options. Based on the set of Coolbricks used for the Pharmabox-S, the three sizes S, M<sub>ii</sub> and L<sub>ii</sub> are being operated with identical Coolbricks. This compatibility reduces stockage and facilitates the picking process.

Sizes and formats:

Box:	M <sub>ii</sub>	L <sub>ii</sub>
Runtime [hrs.]	72	72
Number of Coolbricks	14 Pcs./17.2 kg	20 Pcs./20.4kg
Outside Dimensions [mm]	633 x 437 x 419	633 x 437 x 539
Dimensions [mm]	440 x 245 x 120	440 x 245 x 245
Payload Volume [l]	12.9	26.4
Tare weight incl. Coolbricks [kg]	19.9	29.5

## Qualified performance

Testing and qualification for a minimum runtime of 72 hours was based on AFNOR S99-700 temperature profiles. All temperature measurements were taken without additional payload as „worst-case” scenario. Qualification results for the Pharmabox-S are displayed on the following page.

