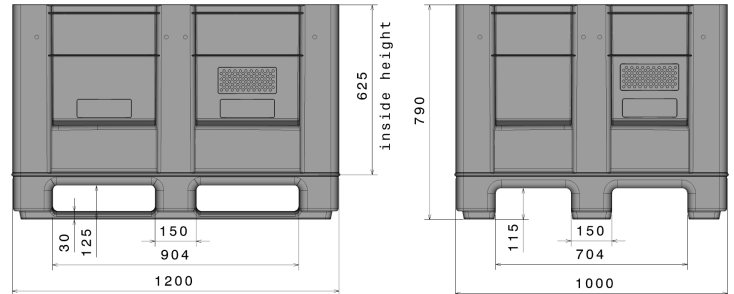


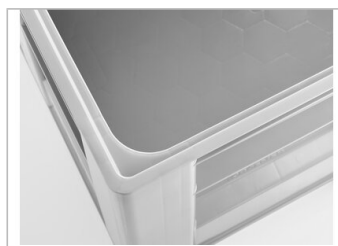
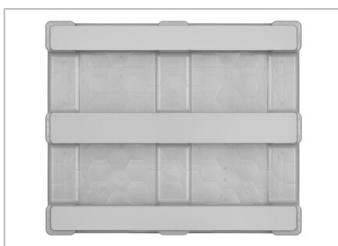
# HB3

1200 × 1000 × 790 mm / 620 l



Art.-Nr.: 83421800

Technical data			
External Dimensions L x W x H (mm)	1200 x 1000 x 790	Internal Dimensions L x W x H (mm)	1115 x 915 x 625
Weight (kg)	43.5 kg		
Volume (l)	620 l		
Material*2	PE		
Load capacity (kg)*3	 <b>Stacking Load</b> 5000 kg	 <b>Holding Capacity</b> 900 kg	 <b>Dynamic Load</b> 1900 kg
Characteristics		Options	
Colour: light grey Runners: 3, welded Stackable Temperature stability: -30 °C to +40 °C, briefly up to +90 °C Resistant to most chemicals and cleaning agents Food-safe. HACCP compliant Container is based on DIN EN 13626 and DIN EN ISO 12048		Reinforcement profiles Lid Drain port	
Loading quantities (Pcs / Approximate amount)			
 <b>Container</b>	Container 20': <b>32</b> Container 40': <b>84</b>	Container 40' High Cube: <b>84</b> Conventional trailer 45' high cube container: <b>104</b>	
 <b>Truck</b>	MEGA-Trailer: <b>104</b>	Jumbo: <b>112-120</b>	
Labelling			
Customised printing and numbering available on request depending on quantity. Position upon consultation.			



\*1 All technical data include characteristic features, which have been tested under specially defined conditions. Varying data may result from different conditions of usage such as loading method, prevailing temperature and length of storage time. All data and specified information are subject to change without notice. Our service team is pleased to be at your disposal to check the special requirements of your individual application.

\*2 Our service team is pleased to be at your disposal if you require exact information about material compositions.

\*3 Stacking load with a holding capacity of 900 kg at room temperature. Dynamic load on a forklift with an evenly distributed load at a room temperature.